



# Research Matters

## Dear Colleagues

Welcome to Research Matters, a newsletter for academic researchers in WIT. Hopefully you are all aware of the creation of the School of Research and Innovation and my own appointment as Head of Research. The establishment of the school reflects the Institute's commitment to the development of a research-centric learning environment within WIT. It is my intention to provide focus and leadership in the development of research excellence across all of the Institute's academic schools. We are committed to the development of an integrated institute-wide research support infrastructure (funding, training, and resources) to maximise the impact of all research activities. Academic research is not constrained by regional and national boundaries and our research should be benchmarked against world class research.



Peer reviewed publications and funding success are important benchmarking parameters for measuring research excellence. Such success reflects well on the academic reputation of the individual researcher(s) and on the Institute.

As an institute WIT has a critical role to play in supporting regional development and sustaining a competitive economy. Our strategy of promoting research, innovation and supporting entrepreneurship is very much in line with government policy. It is my intention to support the development of key alliances between WIT, industry and other external partners for the mutual benefit of all.

Finally, I hope that this newsletter will become one of the main platforms for information of interest to and about academic researchers in WIT. It is important that as a research community we highlight our achievements as we will do in each publication of this newsletter. We will also provide you with regular information on main funding opportunities. The newsletter will be published each term. It will also be accessible from our website, currently being developed. Please send information such as publications, funding successes or articles of interest to the research community to [research@wit.ie](mailto:research@wit.ie) using the subject title 'research news'.

*Dr. Willie Donnelly,*  
Head of Research and Innovation

## School of Research and Innovation New Location

In light of the reorganisation of the research portfolio within the Institute you may well ask – where is the School of Research and Innovation located? The School is situated directly at the top of the 44 steps as seen here on the second floor of the IT building.

The office is here as a resource for the research community. Feel free to call into the office – just climb the 44 steps or alternatively take the lift!



Volume 1, Issue 1

Spring 2004

### Inside this issue:

Industry & Innovation	2
Research Support	2
WIT Research in	3
WIT Research in	4
WIT Research in	5
Research Funding Opportunities	6
Research Funding Opportunities	7
Innovation at WIT	8
Research Training	9
Publications and Presentations by WIT Researchers	10
Publications and Presentations by WIT Researchers	11
Calls for Papers	12
Profile of a Researcher	12

School of Research and Innovation,  
Room IT 2.10  
Tel: 353 – 51 – 845501  
or internally ext 5501  
Email: [research@wit.ie](mailto:research@wit.ie)



Kathryn Kiely,  
Manager External  
Services

Many of you may not be aware that External Services, now lies within the School of Research and Innovation. Its main responsibilities include:

- Promoting the research capabilities and resources of the Institute to industry and external agencies such as Enterprise Ireland, the IDA and others
- Identifying partnership opportunities for WIT with industry such as collaborative or contract research, provision of consultancy services or customised training
- Assisting staff with project proposals and contractual issues relating to research and consultancy projects and the commercialisation of research
- Developing and supporting initiatives, which enhance start up business and aid the development of established companies. Examples include the South East Enterprise Platform Programme and the EnAct initiative currently ongoing with Enterprise Ireland and the regional county enterprise boards
- Managing the development of the WIT Incubation

Centre, which will provide the physical, and support environment for start up companies and WIT associated spin-off companies.

The coming months are traditionally very busy for researchers looking for funding and partners to support their programmes of research. In tandem with this more companies are looking to the Institute as a source of support on research and development issues. This office is here to facilitate such collaborations.

## WIT's Research Support Unit

The Research Support Unit – (RSU), within the School of Research and Innovation, provides support for WIT staff engaged in funded research projects. This involves supporting staff during all stages of the project life cycle from the pre award stage during proposal preparation through to post award stage.

The office, located in room IT 2.10 in the IT Building is managed by Susie Cullinane, Projects Officer, with the assistance of Eimear Cheasty, Administrative Assistant. The RSU's main functions are:

- Alerting staff of research funding opportunities such as those available through the WIT seed funding programme – BEHEST, research councils, government departments, EU RTD programmes and educational trusts
- Assisting WIT staff with research project administration including

contract preparation, recruitment of research assistants and postgraduate students, monitoring and processing project expenditure

- Providing advice on proposal preparation such as proposal costing and partner searches
- Managing the research information systems such as the WIT projects database detailing all funded projects secured by WIT and the Community of Science database which provides information on national and international funding sources.

The RSU works closely with Deirdre Healy, Acting Project Accountant within the Finance Office. Deirdre provides assistance to research staff on all financial matters concerning funded research. Rita Dalton recently joined the School of Research and Innovation as Personal Assistant to Willie Donnelly and Kathryn Kiely.



Susie Cullinane,  
Projects Officer



Eimear Cheasty,  
Administrative Assistant

Research Support Office,  
Room IT 2.10  
Tel: 353 - 51 - 845501  
or internally ext 5501  
Email: [research@wit.ie](mailto:research@wit.ie)

*“The changing nature of state interventions increases the onus on companies to form collaborative partnerships with suppliers, customers and third-level institutions to build networks and clusters of excellence to win competitive advantage through innovation.”*

Forfás, 2004

## WIT Research in Focus

### Estuarine Research Group—Continued Success in Strand III Funding

Congratulations to the Estuarine Research Group (ERG) which has been awarded 300,000 Euro funding under the [Technological Sector Research \(Strand III\)](#) initiative 2003.

The ERG has evolved from the co-operation of a multi-disciplinary group of researchers in the Department of Chemical and Life Sciences with a broad range of interests in the biological and chemical disciplines. Following a detailed study of metal concentrations (Cu, Pb, Cr) in seaweed species, saltmarsh plant species, sediment and water in the Suir Estuary (1995-2000) it became clear that the Suir Estuary is an

ideal location for a broad range of research studies.

Discussions on the establishment of the ERG commenced in 2002 with a view to identifying research collaborators and investigate possible projects. Detailed discussions were carried out with research personnel from a number of key organizations with the aim of identifying a priority list of research projects based on the Suir Estuary. Collaborating organizations included the EPA Johnstown Castle and Regional Inspectorate, Dublin; the Marine Institute; Irish Seaweed Centre; Teagasc Environmental Research Centre, Johnstown Castle; Coillte and Merck Sharpe and Dohme Ltd.

The group and their expertise includes [Dr. Peter McLoughlin](#) (Group Leader) and a specialist in environmental sensing (residual solvents and metals) and novel analytical method development; [Dr. Helen Hughes](#), a specialist in organic chemistry specifically metal complexation investigations using a wide variety of analytical techniques; [Dr. Eddy Fitzgerald](#), a specialist in the use of seaweed and salt marsh plant species for biomonitoring of metal pollution; [Dr. Orla O'Donovan](#), a specialist in protein purification and enzymology and [Dr. Catherine O'Reilly](#), a specialist in molecular biology and genetic studies.

*"The Suir Estuary is an ideal location for a broad range of research studies."*  
Dr. Peter McLoughlin,  
School of Science.

### Optics Research Group Awarded Funding from Enterprise Ireland



The Optics Research Group led by [Dónal Flavin](#) has recently been successful in securing funding under Enterprise-Ireland's [Proof of Concept programme](#). The funding secured will allow this group to extend their research on interferometric

demodulation techniques for Fibre Bragg Gratings sensors. In the programme, they will be exploring the development of a technique which was first demonstrated in a collaboration between the Group and Heriot-Watt University, Edinburgh in 1997.

The proposed research will investigate the transfer of the technology from the scientific demonstration phase towards the development of a prototype.

This research poses significant scientific and engineering challenges, particularly in the context of replacing air-paths in the measurement of interferometer by optical fibres.

Established in 1994, the Optics Research Group (ORG) is active in a range of areas of optical interferometry relevant to optoelectronics/photonics applications in telecommunications and advanced optical/photonics sensing.

*"The proposed research will investigate the transfer of the technology from the scientific demonstration phase towards the development of a prototype."*

Dónal Flavin,  
Optics Research  
Group

## WIT Research in Focus

### North-South Collaborative Study to Explore Benefits of Antioxidants in the Fight Against Blindness

Age-related Macular Degeneration (AMD) is the leading cause of blindness in people over the age of 55 in the western world.

People with Age-related Macular Degeneration (AMD) lose their central vision and have difficulty with everyday activities such as reading, writing, and even recognising familiar faces.

John Nolan, who is working with [Dr. Orla O'Donovan](#) and Ms. Heather Kavanagh in WIT and also [Mr. Stephen Beatty](#) at Waterford Regional Hospital, is investigating the possibility that dietary supplements could delay, or even prevent, the onset of this blinding disease.

"There is a pigment at the back of the eye, known as macular pigment, which filters out dangerous blue light and neutralises damaging free radicals," says John. "This pigment may protect the central retina from AMD. Interestingly, the pigment is entirely of dietary origin and is typically found in fruit and vegetables, with very high concentrations in yellow peppers."

John, who has been awarded the Barbara Knox gold medal by the Irish College of Ophthalmologists for his work in this field has discovered that the offspring of people with AMD, who are known to be at increased risk of this disease, have a relative lack of the pigment.

"However, there are several other risk-factors for age-related macular degeneration, including female gender, iris colour, smoking habits, and, of course, age", he adds. Some of these factors are also associated with a relative lack of this pigment.

"So far we have analysed the results of 150 healthy volunteers, and the results look very encouraging. We are continuing to recruit healthy people between the ages of 25 and 60 for a one-hour visit to our Macular Pigment Laboratory in the Waterford Institute of Technology to complete our work. We are hoping to recruit another 600 volunteers", says Mr. Nolan.

Building on the success of this initial AMD project a further 302,000 Euro has been awarded by the Dr. Mann-Pharma organisation, a subsidiary of Bausch and Lomb, to conduct the [CARMA Study \(Celtic Age Related Maculopathy Arrestation study\)](#) led by Dr. Orla O'Donovan.

This is a North-South collaborative study between Waterford Regional Hospital and WIT and Royal Victoria Hospital and Queens University, Belfast. PhD candidate Nicholas O'Gorman will perform psychophysical tests of vision in patients with early age-related maculopathy (ARM). Subjects will then be treated either with a placebo or antioxidant supplements (including lutein and zeaxanthin), and these tests of fine vision repeated. In brief, if these antioxidant supplements are genuinely of benefit, subtle measures of fine vision should improve, or at least stabilise, in response to the supplements.

### Centre for Health Behaviour Research Awarded Prestigious Contract

Ireland has taken over the presidency of the European Union for the coming six months and in the area of Health, the primary focus is cardiovascular health. To this end a major conference is being held in February in the Minister for Health's own constituency of Cork. The Department of Health and

Children has invited tenders for the preparation of a position paper on Physical Activity and Cardiovascular Disease to support this conference and future developments in physical activity promotion for health. [Dr. Niamh Murphy](#) and [Michael Harrison](#) of the Institute's Centre for Health

Behaviour Research were awarded the research contract, and will also attend the forum of ministers in Cork. This is a prestigious contract, as it will contribute to future government and EU policy in relation to physical activity for health.

## WIT Research in Focus

### Continued Success for the Telecommunications Research Group in the Sixth Framework

The primary research focus of the Telecommunications Software & Systems Group (TSSG) is telecommunications software services management and Internet technologies. And 2003 was a good year for the TSSG.

Some projects were successfully completed such as the Flexwork project and the eFactors project. Others, such as the 7.8 Million Euro OPIUM project had a successful annual review in Brussels and were given the green flag to continue.

Significantly for the future of the TSSG there have been successful funding proposals also. In November a new 14.5 Million Euro project titled 'Designing Advanced Interfaces for the Delivery and Administration of Location-independent

Optimised personal Services', or to use its acronym DAIDALOS began. This was the first of three new projects awarded to the TSSG under the European Commission's current round of funding known as the Sixth Framework or FP6.

Additionally the RISER project (co-ordinated by Fokus and PSI AG of Germany) has been approved for funding under the European Commission's eTen programme. And European Regional Development Funding under the INTERREG IIIB North West Europe Community Initiative on Territorial Planning has also been confirmed for a project on eProcurement.

On top of this the IMPRUE (Instant Messaging as a Platform for the Realisation of a true Ubiquitous computing Environment) a new project with the brief to develop leading-edge technology in

the ambient intelligence arena has been approved for funding by the Enterprise Ireland Commercialisation Fund, Technology Development Phase. IMPRUE is a breakthrough project for the TSSG in many ways, allowing the group to bring major innovations to what is rapidly becoming a mass market technology. So it looks like 2004 will be a busy year!



**For more information about TSSG activities and news see the TSSG newsletter or visit their website at [www.tssg.org](http://www.tssg.org).**

### Centre for Newfoundland and Labrador Studies – Ireland Newfoundland Partnership

Thanks to the work of Dr. Tom O'Toole and Mr. John Maher WIT's Centre for Newfoundland Studies has been awarded a grant of 23,600 Euro by the Ireland Newfoundland Partnership to be used for: Infrastructure equipment and library resources; Guest lecture/seminar series; Business Research Graduate Student Bursary and Joint research programmes with the Business School at Memorial University.

### Papers, Articles, Publications and Presentations by WIT Researchers

In November last year the Research Support Unit circulated a request to all departments for information on publications and presentations they had authored or participated in during the second half of 2003. The very impressive response is listed on pages 10 and 11. This list will be updated in each issue of the newsletter. If you wish your publication details to be included in future editions of this newsletter please email information to [research@wit.ie](mailto:research@wit.ie).

*"IMPRUE is a breakthrough project for the TSSG in many ways, allowing the group to bring major innovations to what is rapidly becoming a mass market technology."*

Eamonn de Leastar,  
TSSG

*"Researchers at the Institute have produced or contributed to a very impressive list of publications in the last term."*

Dr. Willie Donnelly,  
Head of Research  
and Innovation

## Research Funding Opportunities

### Research Funding Opportunities for the Period January–April, 2004

*“The Research Support Unit regularly receives information on funding opportunities from a variety of different sources and agencies. This newsletter aims to alert researchers about currently active funding opportunities.”*

Susie Cullinane,  
Research Support  
Unit

The following table provides information on some of the major research funding opportunities coming up over the next few months. The Research Support Unit regularly receives information on funding opportunities from a variety of different sources and agencies. If you want to register your specific interests please email us at [research@wit.ie](mailto:research@wit.ie) outlining your specific areas of expertise and we will ensure that you receive notification

of relevant funding opportunities when they arise.

Another excellent source of information on funding opportunities is the [Community of Science Database \(COS\)](#). COS is the leading internet site for the global R&D community. With over 23,000 available grants currently listed, COS is the world's largest and most comprehensive source of funding information. You can find COS funding opportunities at <http://fundingopps.cos.com>.

If you register your own expertise with COS their funding service will deliver all new relevant funding information directly to your PC, thereby providing more targeted information to you on mobility and research funding available on a national, EU and international basis. We hope to run another training course on COS this term and you will be notified of the date and venue shortly.

For information on EU research funding visit the Cordis website at [www.cordis.lu](http://www.cordis.lu).

Funding Agency	Programme	Relevant Schools	Closing Date	Summary of Opportunity
Enterprise Ireland (Further information on all EI funding is available on <a href="http://www.enterprise-ireland.ie">http://www.enterprise-ireland.ie</a> )	Commercialisation Fund, Proof of Concept Phase	Science Engineering IT	12th May, 2004 and 15th September, 2004	Designed to support academic researchers to establish that a scientific concept, is sufficiently robust, is seen to address a viable market and is not encumbered by intellectual property considerations. Grants to an initial level of €90k may be awarded for a period typically of up to 12 months.
	Innovation Partnership (formerly Applied Research Programme)	Science Engineering IT	12th March 8th April 7th May	Under this programme, EI assists companies in their collaborative research with institutes by co-funding the institute's research costs. Proposals must demonstrate a clear benefit to the participating companies. Projects need to be of an applied nature. Contributory funding of 50-70% of project costs can be secured.
	FP6 Travel Support Scheme	Science Engineering IT	Any time	The aim of this scheme is to facilitate participation in the EU Sixth Framework Programme. It is in addition to and complements existing international collaboration and exchange schemes. Grants will normally be up to a maximum of 1,000 Euro.

## Research Funding Opportunities

Funding Agency	Programme	Relevant Schools	Closing Date	Summary of Opportunity
Irish Research Council for Science, Engineering & Technology (IRCSET) Further information available on <a href="http://www.ircset.ie">http://www.ircset.ie</a>	EMBARK Postdoctoral Fellowship	Science Engineering IT	27 <sup>th</sup> February 2004	Designed to empower researchers at an early stage of their research career to build upon their PhD work and to benefit from the experience of established research teams. 33,000 Euro (+PRSI) available in the first year and second year, plus appropriate expenses each year.
Royal Irish Academy Further information available from <a href="http://www.ria.ie/committees/tsrp/award.html">http://www.ria.ie/committees/tsrp/award.html</a>	Third Sector Research Programme	Humanities Business Education	8 <sup>th</sup> March 2004	The aim of the TSRP Research Grant scheme is to finance the maintenance and fees of postgraduate studies under the Research Grant heading. Maximum awards under this scheme are between 35,000 - 45,000 Euro.
Technology Sector Research Further information available from the Research Support Unit.	Strand I	All Schools	To be confirmed	The Post-Graduate R&D Skills Training Programme is concerned with the provision of research and development training for highly skilled graduates leading to the award of a Masters degree specifically within the Institute of Technology Sector. The provision of high quality R&D training is the primary objective.  Maximum awards under The Strand I Programme are as follows: Science/Tech: 34,000 Euro Business/Humanities: 32,000 Euro
WIT Further information available from the Research Support Unit.	BEHEST	All Schools	TBC	The purpose of this seed funding is to support the development of new researchers within WIT. There will be two calls for proposals: one in February and one in September. Details to be announced shortly.

*"The BEHEST funding programme is now officially open. The aim of this programme is to support the development of new researchers within WIT. "*

Susie Cullinane,  
Research Support Unit

The role of incubators in the promotion of entrepreneurship, employment and economic growth is widely acknowledged. The 2000 – 2006 Structural Fund guidelines highlight business incubators as a key instrument of EU regional policy.

## Innovation at WIT

### Research and Innovation Centre Planned for 2004

One of the most exciting infrastructure developments at WIT in 2004 will be construction of a new Research and Innovation Centre at Carriganore. Over the past number of months work on the design phase of this project has progressed under the direction of Paul Quirke, Capital Projects Manager; Tom Corcoran, Acting External Services Manager and Mícheál Ó Foghlú, TSSG. The design work is now in the final stages and subject to discussions with the primary funder, Enterprise Ireland. Work will begin on the site in March.

The development consists of a building with two

interlinked components; a Research building and an Innovation building with common reception, atrium and canteen areas. Funding from the HEA's PRTL programme for construction of the research building has been secured by the TSSG (see page 5). Whilst the Innovation building will be funded by Enterprise Ireland.

The new centre will be the first of a cluster of buildings on the Carriganore campus and it is anticipated that the synergy between research and innovation will result in the creation of high-value, spinout companies. The quality of the facilities and their location is aimed at attracting high value-added

businesses to establish or relocate to the tenant spaces in the Innovation centre. WIT's flagship programme for entrepreneurs, the South East Enterprise Platform Programme, will relocate to the new centre when the building is complete.



*Proposed Enterprise & Research building at WIT Campus, Carriganore.*

### WIT Secures Funding for Increased Number of Participants in its Enterprise Programme

The South East Enterprise Platform Programme (SEEPP) run by WIT's School of Business in partnership with Enterprise Ireland and Tipperary Institute has received funding approval for a further 3 years (2004 – 2006).

SEEPP has been awarded funding of 1.2 Million Euro, the highest funding of any Enterprise Programme outside Dublin and the 2<sup>nd</sup> highest in the state. The number of participant places approved has increased by a staggering 67%, on the previous programme.

The funding is provided by the Department of Education

under the [Technical Sector Research, Strand II](#). The increase in funding for SEEPP, is further acknowledgment of the quality and success of the SEEPP.

SEEPP was established in 1998 and to date, programme participants have created more than 208 jobs. This latest round of funding will allow SEEPP to help 75 new businesses get started in the southeast region.

Applications for participants for the next programme due to commence in mid 2004 are currently being accepted.

For more information contact [seepp@tssg.org](mailto:seepp@tssg.org).



*Eugene Crehan,  
EnAct Project Manager and acting  
SEEPP Programme Manager*

## Innovation at WIT

### Enterprise Planning and Development Module Embodies Institute's Innovative Approach to Research

Research at WIT is relatively new; the right to carry out research was awarded to the Institutes in 1992. And this freshness is recognised by the Institute as a clear advantage, which does not tie it in to more traditional modes of operation and enables it to take a more innovative approach to integrating research in to its mainstream activities. Committed to ensuring successful integration of the research, teaching and learning process, the Institute's research policy supports the inculcation of a research-driven learning culture and a research-informed teaching approach throughout.

This approach was recently demonstrated in a field trip in November last year taken by final year Bachelor of Business Studies students who are studying for the Enterprise Planning and Development Module. The students visited the Patent Office in Kilkenny. The purpose of the visit was to acquaint students with the processes and opportunities associated with the registration of patents, copyrights and trademarks both in Ireland and internationally. Recognising the increasing importance of intellectual property in business development at firm level and the value content of Irish academic research and innovation in a wider socio economic context, this exposure is a critical element in the students' educational advancement. The visit was arranged by lecturer Mr. John Maher, Department of Accountancy and Economics, who contributes to the South East Enterprise Platform Programme at WIT and is undertaking innovation related research.

### Research Methodology and Skills Programme

With the development of postgraduate research within the Institute, the requirement for specialised training in research methods is becoming increasingly evident, as is the need to foster a thriving postgraduate environment and community. In response to this expressed need, a number of experienced researchers within WIT and the Educational Development Centre, have come together to offer training in a comprehensive range of research methodologies and skills. A programme of research training has been devised, and will be offered to all those involved in postgraduate study. All staff and students engaged in postgraduate work will benefit from this training. By the end of the course, participants will be able to:

- Discuss the value of research and relate it to their proposed research area;
- Select and refine a research topic in order to develop a research proposal, and if necessary write a funding proposal;
- Evaluate the different research paradigms in order to select an appropriate research approach and methodology;
- Present, summarise and collect data and use techniques of data analysis, including associated computer packages if relevant;
- Demonstrate an awareness of health and safety/ ethical and political issues in relation to research;
- Write a dissertation with knowledge of academic styles and conventions;

- Plan and carry out effective project management of their research;
- Disseminate research findings through conferences or publications.

Planned topics for the coming months include:

- Theoretical approaches to the qualitative paradigm, Dr. Jean Clarke and Mr. John Wells, Wed. 18th February, 2004, RM F03.
- Grounded theory Dr. Jean Clarke and Mr. John Wells, Wed. 25th February, 2004, RM F03.
- Phenomenology, Mr. Jarlath McKenna, Wed. 3rd March 2004, RM F03.
- Ethnography & Participant Observation, Dr. Jean Clarke, Wednesday 10th March, 2004, RM F03.
- Fieldwork & methods of data gathering Dr. Jean Clarke & Mr. John Wells Wed 24th March, 2004 Rm F03
- Demonstration of Computerised Analysis of Qualitative Data Sources : QSR NUDIST Version 4. Mr. John Wells, Wed 31st March, 2004 Rm. F03
- Case study methods, Mr. John Wells Wednesday 7th April, 2004 Rm F03

For full information contact Dr. Anne Jordan by email at [ajordan@wit.ie](mailto:ajordan@wit.ie).

*"We are committed to ensuring the successful integration of the research, teaching and learning process."*

Dr. Willie Donnelly,  
Head of Research and Innovation

*"Approximately twenty-five topics have been scheduled for the academic year. To accommodate participation classes are usually held in the evenings"*

Dr. Anne Jordan,  
Manager WIT Education Development Centre

## Publications and Presentations by WIT Researchers

### Journals

- Barry P. Triangle Geometry and Jacobsthal Numbers. *Irish Math. Soc. Bulletin* 51 (2003), pp 45-57.
- Dobbyn V., Howley R., Kirwan P., & McLoughlin P. Measurement of the rates of diffusion of Halomethanes into Polymer Films Using ATR-FTIR Spectroscopy. *Intern. J. Environ. Anal. Chem.*, 83 (7-8), 643-652,
- Egan T., Clancy S. & O' Toole T. The Integration of e-Commerce Tools into the Business Process of SMEs. *Irish Journal of Management*, Vol. 24, No. 1, pp. 139-153
- Fitzgerald E.J., Caffrey J.M., Nesaratnam S.T. & McLoughlin P. Copper and Lead concentrations in salt marsh plants on the Suir Estuary, Ireland *Environmental Pollution* 123 (2003) 67-74
- Harrington D. & Keating M. *The challenges of implementing quality in the Irish hotel industry*. Journal of European Industrial Training, 2003, pp. 441-453.
- Hayes R. The Scope of the Movies: three films and their influence on Eugene O'Neill! *The Eugene O'Neill Review*, 25 (1/2), 2003
- Howley R., MacCraith B.D., O'Dwyer K., Masterson H., Kirwan P., McLoughlin P. Determination of Hydrocarbons Using Sapphire Fibres Coated with Poly(dimethylsiloxane). *Applied Spectroscopy*, 57(4),
- Howley R., MacCraith B.D., O'Dwyer K., Kirwan P., McLoughlin P. A Study of the Factors affecting the diffusion of chlorinated hydrocarbons into polyisobutylene and polyethylene-co-propylene for
- Molloy R. Towards objectivity in oral language testing. *WIT Erga Journal*, 2003.
- Moloney C. *The Boss Murphy Musical Legacy: Irish Music from the Churchtown Area of North Cork*. Churchtown: Noah's Ark Press, pp. 188
- Murphy B, McLoughlin P. Determination of Chlorinated Hydrocarbon Species in Aqueous Solution Using Teflon Coated ATR Waveguide/FTIR Spectroscopy *Intern. J. Environ. Anal. Chem.*, 83 (7-8), 653-662,
- Murphy B, Kirwan P., & McLoughlin P. Investigation into polymer-diffusant interactions using ATR-FTIR spectroscopy. *Vibrational Spectroscopy*, 33/1-2, 75-82, 2003
- Nolan LM, Harnedy PA, Turner P, Hearne AB, O'Reilly C. The cyanide hydratase enzyme of *Fusarium lateritium* also has nitrilase activity. *FEMS Microbiol Lett.* 2003 Apr 25;221(2):161-5.
- O'Reilly C, Turner P. The nitrilase family of CN hydrolysing enzymes - a comparative study. *J Appl Microbiol.* 2003;95(6):1161-74.
- O' Toole T. E-Relationships: Emergence and the Small Firm. *Marketing Intelligence and Planning*, Vol. 21, No. 2, pp. 115-122
- O' Toole T., McCarthy. A., & Garavan T. HRD: Working at The Boundaries and Interfaces of Organisation. *Journal of European Industrial Training*, Vol. 27, Nos. 1-3, pp. 58-72
- O' Toole T. & Harrington, D. Boundaries and Interfaces in Management. *Irish Journal of Management*, Vol. 24, No. 1, pp. 1-6
- Stapleton L., & Murphy C.(2003) Revisiting the Nature of Information Systems: The Urgent Need for a Crisis in IS Theoretical Discourse. *Transactions of International Information Systems*, vol. 1, no. 4.

### Books

- Antoine-Dunne J., Quigley P. (Eds.) *The Montage Principle, Eisenstein in New Cultural and Critical*
- Barry M., Barry P., Byrne-Doran J., & Wall P. The Use of ICT/ODL in Promoting Social Inclusion. WIT eLearning Minerva EU Project Final Report
- Coady J., Stapleton L. & Foley B. (2003) TEAMWORK: A Combined Methodological and Technological Solution for E-Working Environments. IN: Grundspenkis, J, et. al. (eds.), *Information Systems*
- Stapleton L.(2003) Information Systems and Automation Technology as Social Spaces IN Brandt. Et. Al. *Human Centred Issues in Advanced Engineering*, Elsevier.
- Wall P., & Stapleton L. (2003) *The kinds of IT Services most Appropriate for a Particular Sourcing Strategy*. IN: Proceedings of the International Conference on Enterprise Information Systems, ESEO, Aungiers, France.

In November last year the Research Support Unit circulated a request to all departments for information on publications and presentations they had authored or participated in during the second half of 2003. The very impressive response is listed on these pages.

## Other

- Antoine-Dunne J. *Diasporic Literatures and the Problem of Form*. Presented at: 'Identity and Cultural Diversity in Irish Writing.' Trinity College Dublin, August 2003.
- Barry M., Byrne-Doran, J., Rautamies E., & Wall P. *Using a Virtual Learning Environment to Collaboratively Develop and Deliver an Online Module Entitled 'Social Inclusion Through Play'*. Presented at the EdTech Conference, Waterford Institute of Technology.
- Barry M., Byrne-Doran J., & Rautamies E. *Social Inclusion from a Practitioner's perspective: Reflections and experiences in the training of early childhood educators, carers and service providers, including collaborative learning in a transnational context*. Symposium presentation at the European Early Childhood Education Research Association, EECERA Conference, University of Strathclyde.
- Barry M., Barry P., Byrne-Doran J., & Wall P. *Online Courses in Social Inclusion from a Practitioner's Perspective in a Collaborative Learning Context*. Presented at the European Early Childhood Education Research Association, EECERA Conference, University of Strathclyde.
- Cahill C., Coffey L., & O'Reilly C. *Biochemical and molecular analyses of genes associated with nitrile metabolism from four novel Rhodococcal strains*. Presented at SGM conference on Biocatalysis and Biodegradation at UCD 4/5 September 2003
- Doran J., O'Reilly C. & Duggan, P. *Analysis of substrate range and catalytic activity of novel nitrile metabolising enzymes*. Presented at SGM conference on Biocatalysis and Biodegradation at UCD 4/5 September 2003
- Harnedy P., McSweeney C., Turner P., & O'Reilly C. *Comparison of enzyme activity of two cyanide hydratase enzymes*. Presented at SGM conference on Biocatalysis and Biodegradation at UCD 4/5 September 2003
- Holden MT and O' Toole, T. *An Empirical Exploration of Communication's Role in the Governance of Manufacturer-Retailer Relationships* Proceedings of the 7th International CRM Research Conference on Relationship Marketing, Berlin, June 22nd-25th, pp. 431-445
- Kielthy J., Frisby R., & Ó Foghlú M. *An investigation into QoS provisioning in a DiffServ Network*. IN: Proceedings of the 2nd IEE/IEEE Telecommunications Systems Research Symposium, ITSRS 2003, Dublin, Ireland.
- Kielthy J., C Kulatanga, Frisby R., & Ó Foghlú M. *An evaluation of QoS provisioning for UBR applications in a DiffServ Network*. Proceedings of the 3rd Information Technology and Telecommunications, IT&T 2003, Letterkenny, Donegal, October, 2003.
- Lynch P. and O' Toole T. *After Von Hippel: The State of User Involvement research In New Product Development* Proceedings of the 19th Annual IMP Conference 4th-6th September, Lugano, pp. 1-18
- McSweeney C. *Comparison of enzyme activity of two cyanide hydratase enzymes*. Presented at Bionet conference GMIT 16/17 December 2003.
- Moloney C. *Edward Bunting* The Encyclopaedia of Ireland (Lalor, Brian ed.), pp. 139-40
- Murphy D.F., & Flavin D.A., McBride R., & Jones J. D. C. *Interferometric interrogation of in-fiber Bragg grating sensors without mechanical path length scanning*. Presented at the 12th Institute of Physics Conference on Sensors & their Applications, Limerick, September 2003.
- Rothwell J., & Flavin D.A. *Dispersion measurement by white-light interferometry based on Fresnel reflections*. Presented at the European Conference on Lasers and Electro-Optics (CLEO Europe) at Munich, June 2003
- Rothwell J., Murphy D.F., & Flavin D.A. *Simultaneous measurement of group delay, first- and second-order dispersion of lightwave materials by tandem interferometry*. Presented at the 16th International Conference on Optical Fibre Sensors, Nara, Japan, October 2003.
- Thornton N. *Where Cuba meets Mexico: Alejo Carpentier and Elena Garro*. Presented at the Royal Irish Academy Conference: Intercultural Spaces: Language, Culture and Identity, November 2003.
- Thornton N. *Screening/Writing a Life: Ants que anochezca/Before Night Falls* Presented at conference held at the National University of Ireland, Galway: Latin American Identities: Legacies and Possibilities.

Don't worry if your publication hasn't been included. This list will be updated in each issue of the newsletter and if you wish your publication details to be included in future editions please email the information to [research@wit.ie](mailto:research@wit.ie).

We're going to Harvard!  
Well not really but we will be using the Harvard System of citation from now on so please bear this in mind when you're submitting your publications list to the Research Support Unit. A quick search on google will point you to lots of guides on how to cite publications using the Harvard system.



## Waterford Institute of Technology

**All staff in the School of Research and Innovation are based on the second floor of the Information Technology Building. Contact details are as follows:**

Dr. Willie Donnelly,  
Head of School of Research and Innovation,  
Office: IT 2.07  
Tel: 353 – 51 – 845500 or internally ext 5500  
Email: [wdonnelly@wit.ie](mailto:wdonnelly@wit.ie)

Kathryn Kiely,  
Manager External Services,  
Office: IT 2.08  
Tel: 353 – 51 – 302034 or internally ext 2034  
Email: [kkiely@wit.ie](mailto:kkiely@wit.ie)

Susie Cullinane,  
Projects Manager,  
Research Support Unit,  
Room IT 2.10  
Tel: 353 – 51 – 845503 or internally ext 5503  
Email: [scullinane@wit.ie](mailto:scullinane@wit.ie)

Eimear Cheasty,  
Administrative Assistant,  
Research Support Unit,  
Room IT 2.10  
Tel: 353 – 51 – 845501 or internally ext 5501  
Email: [echeasty@wit.ie](mailto:echeasty@wit.ie)

Rita Dalton,  
Personal Assistant,  
School of Research and Innovation,  
Room IT 2.10  
Tel: 353 – 51 – 845501 or internally ext 5501  
Email: [rdalton@wit.ie](mailto:rdalton@wit.ie)

Newsletter edited by:  
Margaret Grene

## Calls for Papers

Mícheál Ó Foghlú is a member of the International Programme Committee for the e-Challenges conference. He has chaired sessions and attended as speaker at many conferences, most recently the HEAnet conference in Kilkenny, November 2003. For tracking interesting conferences Mícheál recommends the following IT related sites:

IEEE Computer Society list of conferences:  
<http://www.computer.org/conferences/calendar.htm>

IEEE Communications Society list of conferences:  
<http://www.comsoc.org/confs/calendar/2003/confdate.html>  
<http://www.comsoc.org/confs/calendar/2004/confdate.html>

ACM list of conferences:  
<http://campus.acm.org/calendar/>

There's also the EU site [http://europa.eu.int/information\\_society/index\\_en.htm](http://europa.eu.int/information_society/index_en.htm) where you can sign up for their newsletter and find out about all the forthcoming conferences.

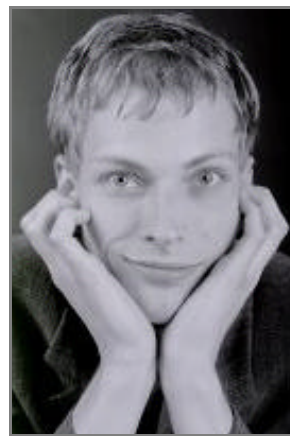
Perhaps more important, for academics, is the dates for which you need to submit abstracts or draft papers for review if you want to present at a conference. The following site does a good job of gathering as many as possible <http://www.papersinvited.com/>.

## Profile of a Researcher – a Personal Perspective Dr. Sven van der Meer

My motto is "Don't dream your life, live your dream!" After studying and working for ten years in Germany, mostly in Berlin, I had the dream to further my career as a professional researcher and, at the same time, explore a new culture. Following my dream, I joined WIT, namely the TSSG, in November 2002. The professional standard at the TSSG was impressive and the overwhelming kindness of the members of the group was something I had not anticipated at all. Having lived in Waterford now for more than a year, this impression has become even stronger.

Working in research is not a 9 to 5 job.

Researchers must be self-disciplined and autonomous. They often do not know what the next day brings and there is always a time of uncertainty or even fear that the work conducted might not have the quality or originality that is needed in the research community. Even worse, as group leader or project leader a researcher has responsibility for a team of people including the difficult task of attracting money for paying the salaries. This intense work needs to be balanced in the private life, and Waterford is certainly a very good spot offering many sorts of entertainment such as



live music and numerous options for outdoor activities.

Eventually, I found a place to live my dream with respect to professional research and private entertainment. Now, we work hard to make this a place where other peoples' dreams can be realised.

Tecnet have announced their call for papers for IT&T 2004. The theme of this year's conference is Telecommunications and Information Technology Convergence. Deadline for Abstracts is April 16th. For information see [www.itconference.com](http://www.itconference.com)