



»» **Study Abroad
Opportunities for
North American Students**



» Contents

● Introduction	1
● Why Ireland?	2
● Why WIT?	3
● Available Subjects	4
● Course Structure	5
● Year / Semester Abroad	6
● Transfer / Advanced Entry	7
● Summer Schools	8
● Exchange Programmes	9
● Supervised Project or Work Placement Abroad	10
● Support for International Students	11
● Planning your study abroad	12



“Studying at WIT was wonderful - I can't wait to visit again”

Ellen Delibert, NY

» Introduction

Because of extensive emigration, especially during the nineteenth century, Ireland has a very special affinity with the USA and Canada. To a very large extent we share an ethnic, historical, social, cultural and linguistic heritage.

It is part of the strategy of Waterford Institute of Technology to foster these links and to provide opportunities for young people from both WIT and partner colleges in the USA and Canada to visit each other's colleges and to learn together. To achieve this WIT has developed a range of Study Abroad Programmes which are suitable for students from the USA and Canada.

Study Abroad Programmes

- » Year or Semester Abroad
- » Transfer / Advanced Entry
- » Summer Schools with Credit
- » Exchange Programmes
- » Supervised Project or Work
- » Placement Abroad

Depending on the activity, interested students may apply directly to WIT, through their home college or university international office or through international education agencies.



Sample Recreational Activities!

- » Learn the basics of Gaelic football, hurling and camogie
- » Learn some Irish Dancing
- » Try a bit of sailing or surfing
- » Orienteering and hiking in the forests and mountains of Co. Waterford
- » Irish pubs and singing
- » Birdwatching - Kilmore Quay and Saltee Islands (wildbird reserve)
- » Use the WIT Radio Studio

» Why Ireland as your study abroad option?

- » Ireland has an excellent educational system.
- » Qualifications from Irish state institutions are recognised worldwide.
- » Classes are provided through English.
- » Education in Ireland helped to create the "Celtic Tiger" economy.
- » Colleges are small and provide personal attention for students.
- » The environment is clean and safe.
- » Irish people are warm and hospitable to overseas students.



» Why Waterford?

- » Waterford is the fifth city of Ireland with a population of 50,000. This makes it large enough to provide a good range of facilities and small enough to be friendly and safe.
- » It is easily accessible from international airports at Dublin, Cork or Shannon.
- » It is the capital of and gateway to the south east region.
- » This is a beautiful region with mountains, rivers, historic towns and buildings, archeological remains and a long coastline with many small bays and harbours.
- » It has the warmest and driest climate on the island of Ireland and is often referred to as "The Sunny South-East".
- » It is a centre for industry, its most famous product being Waterford Crystal.
- » The cost of living in Waterford is lower than the costs in larger cities.
- » There are very good sporting and recreational facilities in Waterford and its surroundings. The main past-times are golf, horse riding, yachting and hill walking.
- » During teaching terms, students make up 10% of the population of the city and contribute to its vibrant community and social life.





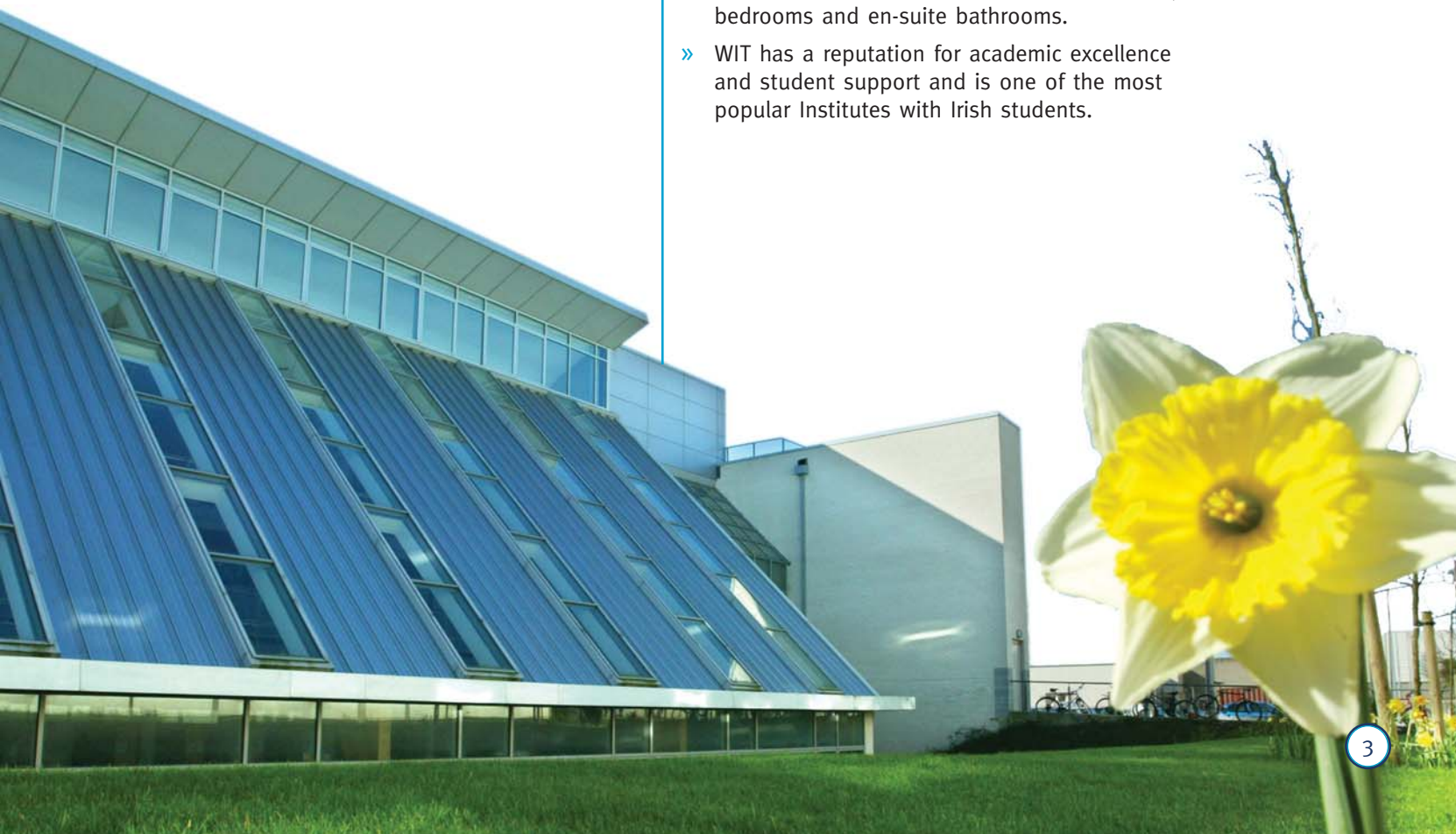
WIT Accommodation

We strongly encourage all international students to avail of WIT managed apartments. The main reason is that it's a great way to meet other students and integrate into college life. They are also modern, clean, fully equipped, affordable, safe and well managed.

These apartment blocks are located in various places around the city, always within a short distance from the campus and from shopping facilities. They comprise single or double study bedrooms each with an en-suite shower room. The kitchen and sitting room is shared by groups of 4 to 6 students. You can explore them for yourself on our website.

» Why Waterford Institute of Technology?

- » WIT is an autonomous state-sector university-level Institute awarding qualifications with the authority delegated to it by the National Qualifications Authority of Ireland. It was established in 1970 and currently provides higher education for 6,500 full-time and 3,400 part-time students.
- » WIT delivers courses with a vocational focus at higher certificate (2 year), bachelors degree (3 or 4 years) and postgraduate (masters and doctorate) levels. Courses are aligned with the European Credit Transfer System and have worldwide recognition.
- » The Irish state has invested heavily in WIT's modern buildings, facilities and equipment.
- » WIT is noted for its modern and innovative curricula, its excellent teaching and its strongly developing research profile.
- » WIT's new library was recently referred to as "one of the best in the higher education sector" (Irish Times September 2002).
- » WIT provides a caring environment for all its students and is especially sensitive to the special needs of overseas students.
- » WIT provides excellent modern apartment-style accommodation for students with single study/bedrooms and en-suite bathrooms.
- » WIT has a reputation for academic excellence and student support and is one of the most popular Institutes with Irish students.



“ Very educational -
a perfect way to
incorporate fun whilst
learning ”
Jonelle Given, NY

Examples of Educational Visits

Some of these involve access to places that are off the tourist trail and require special negotiation.

- » Johnstown Castle and Gardens
- » Kilkenny Castle and Craft Centre
- » Dolmen Drive
- » John F. Kennedy Arboretum
- » Hook Head Lighthouse
- » Jamesons Distillery
- » Fota House and Gardens
- » Killarney, Muckross House and the Lakes
- » Dublin, Four Courts, Trinity College and Mountjoy Prison
- » National Museum

» What subjects can I study at WIT?

WIT is divided into six separate schools, each with responsibility for a wide range of programmes and research activities.

It is part of the strategy of Waterford Institute of Technology to foster these links and to provide opportunities for young people from both WIT and partner colleges in the USA and Canada to visit each other's colleges and to learn together. To achieve this WIT has developed a range of Study Abroad Programmes which are suitable for students from the USA and Canada.

1. Business

offers courses in management, administration, marketing, retailing, organisational behaviour, HR, finance, accounting, economics and statistics.

2. Science and Computing

offers courses in laboratory sciences, agriculture, horticulture, forestry, computer programming, telecommunications software, software development and multimedia

3. Engineering

offers courses in electronics, telecommunications, civil, mechanical and production engineering, construction studies, architectural technology and architecture.

4. Humanities

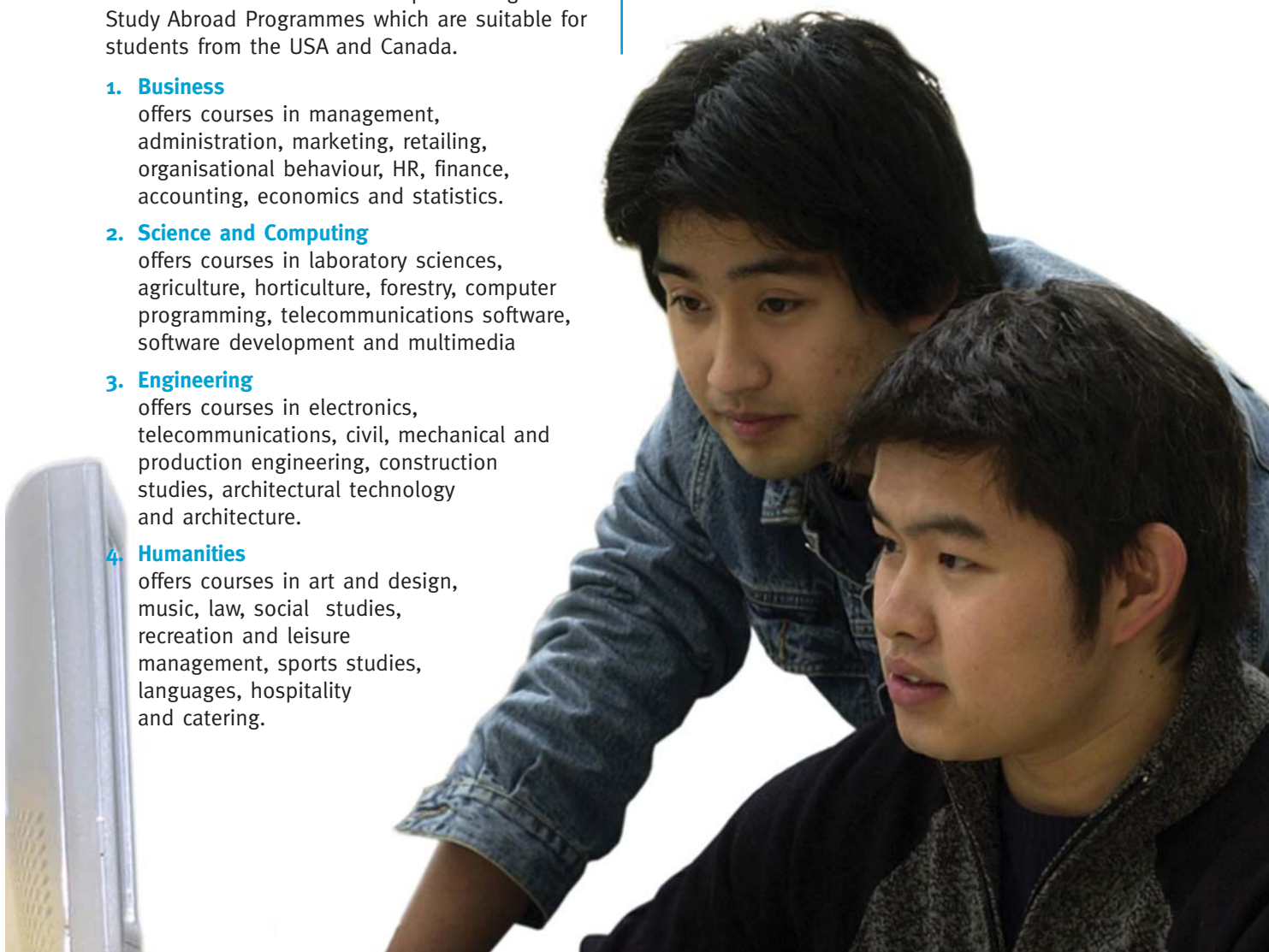
offers courses in art and design, music, law, social studies, recreation and leisure management, sports studies, languages, hospitality and catering.

5. Health Sciences

offers courses in nursing and health care.

6. Education

offers courses in teaching and learning, community development and literacy development.



“ I thoroughly recommend the programme
 - the best experience of my life ”
Kimberly Adam, NY

» How are courses structured at WIT?

WIT operates on a semesterised basis.

Semester 1: September to January

Semester 2: February to June

Undergraduate courses or programmes are offered at Levels 6-10 of the national qualifications framework (NQAI).

Higher Certificates Level 6	2 years duration
Bachelor's Degrees Level 7	3 years duration
Honours Bachelor's Degrees Level 8	3-4 years duration
Masters Level 9	
PhD Level 10	

In line with the European Credit System, each year of full-time study is worthy of 60 credits.

Full-time students normally take 12 modules, each valued at 5 credits, per academic year (6 per semester).

In the Irish system, students normally select their "major" as a particular course or programme before they enter the Institute.

They will study this subject plus other related subjects for the duration of the course, starting at the lowest level (Level 6) and progressing each year to more complex topics and higher level skills (Levels 7 and 8).

Guidance will be provided for incoming study abroad students to help them select the modules and the levels that will satisfy the requirements for credit in their home institution.

Modules from some WIT courses can be offered intensively as Summer Schools. Students who meet all the learning outcomes will be awarded credit.

On completion of a module and its assessments, students are awarded grades as percentages.

“ These six weeks were
the best of my life ”

Paul DiValentino, NY

» Year or Semester Abroad

This programme is suitable for North American students who wish to spend either a year or a semester of their undergraduate studies at WIT.

This programme is suitable for North American students who wish to spend either a year or a semester of their undergraduate studies at WIT.

Study abroad students select courses, sit examinations and receive credit just like full time WIT students. Therefore, they become fully integrated into the student body, and gain a true experience of being a student abroad.

A study abroad student must select courses that will fulfil the academic requirements of his/her home institution. Students can take up to 6 courses per semester (30 credits) and 12 (60 credits) for the full year. Students can choose a wide range of subjects from across many disciplines, but must take timetable and examination scheduling into consideration when making their selection. Our study abroad co-ordinator at WIT can advise on study plans and subject selections.

Entry requirements for study abroad students are 2.7 GPA cum (min) from a recognised US from a recognised US university or college. Students may apply directly through one's home institution or through a study abroad agency. The closing date for September entry is the 30th June of the same year, and for February entry is the 30th November of the preceding year.



All applications are to be sent to WIT's International Office, Cork Road, Waterford, Ireland.

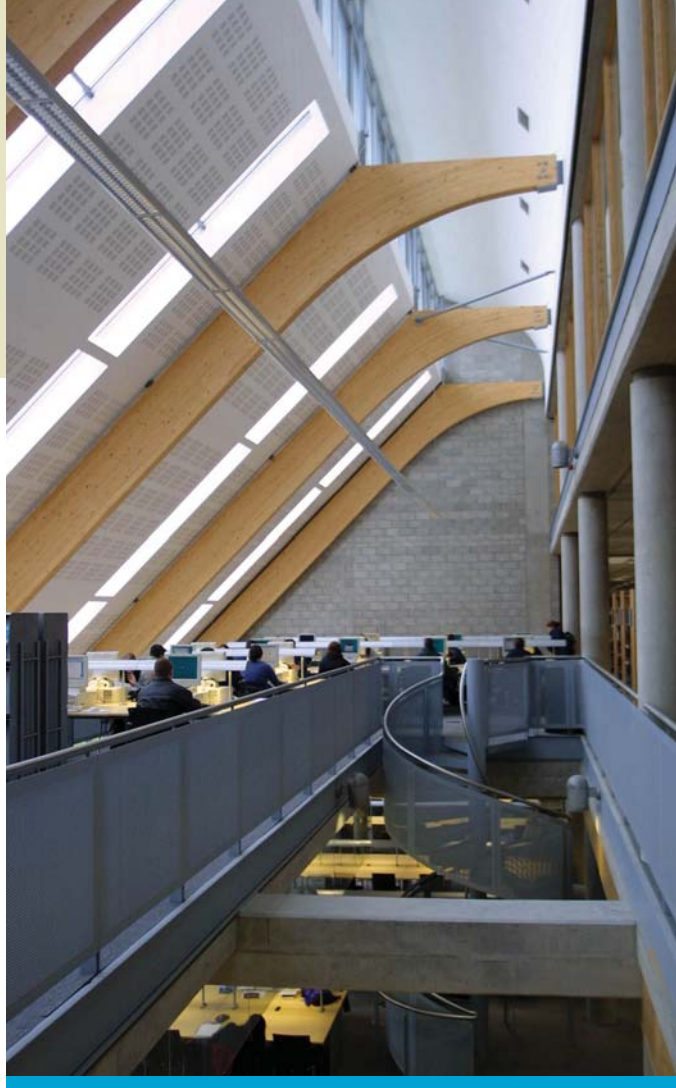
Application forms are available on request (email: international@wit.ie) or can be downloaded from our website (www.wit.ie/international)

All study abroad students are asked to participate in WIT's Orientation Programme, which takes place directly before the start of term.

During this programme, students receive a warm welcome to Ireland, Waterford and WIT. All academic and registration matters are set in motion, students are helped settle into their choice of accommodation, and a very worthwhile orientation and social programme to both the college and life in Ireland is provided.

“ Best five weeks of my life ”

Devid Fine, Connecticut



» Transfer /Advanced Entry

This applies to students who wish to leave their college in the USA or Canada having completed a two or three year course and transfer to WIT for one or two years in order to gain a WIT award.

Many WIT programmes are structured to provide students with a ladder of opportunity. They can study for an award and then decide whether to continue studying for a higher award or they may go to work. If they chose to work, they can also continue their studies in part-time mode or return to study at a later date.

The system is summarised in the Table below.*

This system therefore has natural breaks after years two and three. At these points WIT can provide an opportunity for students to transfer inwards from other institutions and for their study to be recognised for advanced entry.

In many cases there are advanced entry or transfer agreements between WIT and other institutions worldwide. In such cases, the two institutions will have compared courses and declared equivalences which makes it very easy for students with good grades to transfer to WIT.

If a student's home college does not have such an agreement with WIT, they may still apply for advanced entry but the onus will be on the student to supply WIT with the following information about the course of study they have completed.

- » Details of the status of the institution in which they studied
- » A copy of the course programme taken
- » Module descriptions and sample examination papers
- » A transcript of the results achieved

The entry requirement for study abroad students is 2.7 GPA cum (min).

Applications

Because it takes longer to review these applications, their deadline is mid-April, i.e. 6 weeks earlier than the normal study abroad deadline.

* Entry Point	Award	Progression	Alternative
After High School	2 Year Higher Certificate	To Bachelor's degree	To work
After Higher Certificate	Bachelor's Degree (1 year more)	To Honours Bachelor's degree	To work
After Bachelor's Degree	Honours Bachelors Degree (1 year more)	To Masters Degree	To work

“ I found Ireland very beautiful,
friendly and full of history ”

Jessica Hildreth. NY



» Summer Schools with Credit

WIT offers two types of Summer School for credit. They are scheduled for the same time period and there is a lot of interaction between the participants.

The Schools are:

1. The WIT / SUNY Partnership Summer School is administered through SUNY.
2. The Irish Culture and Heritage Summer School which is open to all university and college students from USA or Canada or indeed, worldwide.

The WIT / SUNY Partnership Summer School

This is a WIT / SUNY (State University of New York) Partnership programme which has been running very successfully for the past five years. Students, mainly from the State University of New York, attend WIT for a five week period. All participants must study an Irish Culture module and then have an option to study either Irish Constitutionalism or the Irish Family in The Social Care Context. Students live in WIT apartments and enjoy a programme of educational visits and social activities.

Further Information:

Mr. Walter O'Leary, School of Humanities,
WIT, College Street Campus, Waterford. Ireland.
Tel: +353 51 302265 **E-mail:** woleary@wit.ie

The Irish Culture and Heritage Summer School

This is a new Summer School which has been developed in response to the demand from students who are not from SUNY or who prefer other subject options or who wish to stay in Ireland for only 3 weeks. It comprises two options:

Option 1

The aim of this programme is to introduce students to some texts/films by Irish writers/producers thereby exposing them to some of the most influential and creative artistic talents of the twentieth century. The two modules are Irish Literature and Irish Film Studies

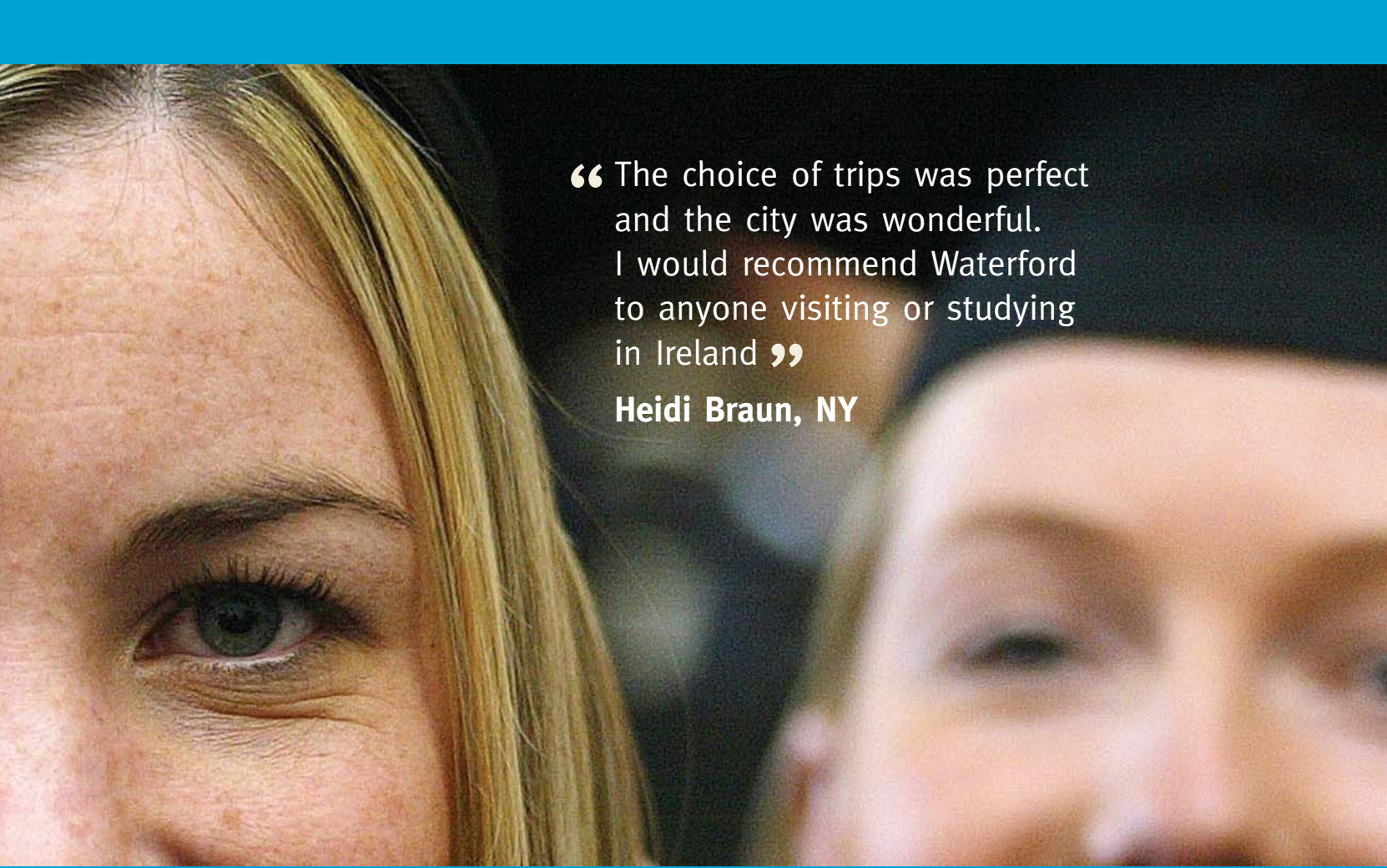
Option 2

This programme aims to give the student an appreciation of the extent and richness of archaeology in South East Ireland. It will then explore one of the most important periods of Irish history which had such an influence on the future direction of the Irish nation. The two modules are Irish Archaeology and Irish Renaissance History.

Both options include a range of field trips to places of historical, archaeological, cultural or legal significance. In addition to these educational activities there will be a social programme, involving exposure to Irish music and dancing and Gaelic games.

Students may stay in WIT apartments or they may make private arrangements.

The entry requirement for Summer School students is 2.5 GPA cum (min).



“ The choice of trips was perfect and the city was wonderful. I would recommend Waterford to anyone visiting or studying in Ireland ”

Heidi Braun, NY

» Exchange Programmes

WIT is interested in entering into exchange agreements with universities and colleges in USA and Canada.

WIT has been heavily involved in the European Union's Erasmus Exchange scheme for many years and has bilateral agreements with over 40 Universities in almost all countries of the EU. It is now using this experience to develop similar schemes with institutions in the USA and Canada. Successful bilateral exchange agreements have already been established between WIT and universities in the USA and Canada in the past number of years. Such arrangements must be bilateral with similar numbers of students moving in each direction.

In the case of exchanges

- » Students continue to study for the award of their home college / university
- » The home college / university recognises credit gained in the partner college / university
- » Students pay normal tuition fees to their own institution
- » Students pay for their own travel and for food and accommodation at the normal rates of the host institution
- » The entry requirement for exchange students is 2.7 GPA cum (min)

Universities or colleges who are interested in this option should contact **Ms Sinead Cooke, International Office, WIT (scooke@wit.ie)**.

The request will be referred to the appropriate School in WIT and suitable study plans will be explored.

Further Information

on any of these programmes can be obtained by contacting
Ms. Sinead Cooke, International Affairs Manager, International Office, Waterford Institute of Technology, Waterford, Ireland
Telephone +353 51 845515 email scooke@wit.ie

Checklist of what you need to attend these programmes

- » All these programmes are for University or College students aged 18 or over.
- » For year / semester abroad, exchanges and work placement: 2.7 GPA cum (min).
- » For Summer Schools: 2.5 GPA cum (min)
- » Completed application form and academic recommendation
- » Valid passport
- » Health insurance
- » A source of funding for your fees and accommodation.

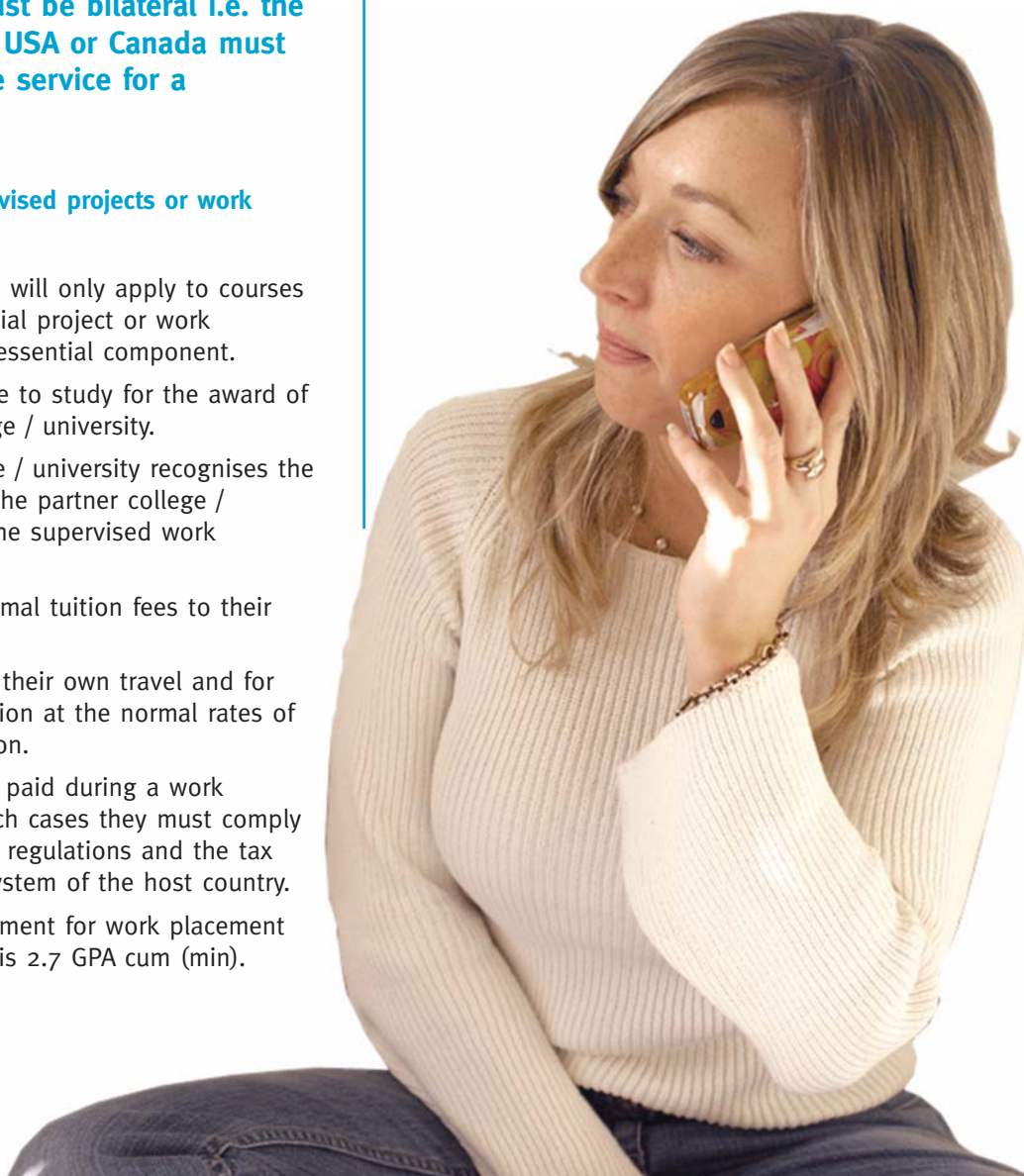
» Supervised Project or Work Placement Abroad

WIT is interested in bilateral arrangements of this type where registered students from a Canadian or American college come to Ireland for a research project or work placement and are academically supervised by WIT. Such arrangements must be bilateral i.e. the institution in the USA or Canada must provide the same service for a WIT student.

In the case of supervised projects or work placements:

- » This arrangement will only apply to courses where a substantial project or work placement is an essential component.
- » Students continue to study for the award of their home college / university.
- » The home college / university recognises the credit gained in the partner college / university or in the supervised work placement.
- » Students pay normal tuition fees to their own institution.
- » Students pay for their own travel and for accommodation at the normal rates of the host institution.
- » Students may be paid during a work placement. In such cases they must comply with work permit regulations and the tax and insurance system of the host country.
- » The entry requirement for work placement abroad students is 2.7 GPA cum (min).

Universities or colleges who are interested in this option should contact **Ms. Sinead Cooke, International Office, WIT (scooke@wit.ie)**. The request will be referred to the appropriate School in WIT and suitable arrangements will be explored.



Clubs and Societies

There are many active student clubs and societies within the institute providing opportunities for students to participate in sporting, cultural and academic activities. In most cases the societies are organised by students and thus provide an opportunity for them to test and develop their organisational, fund-raising and social skills. Students are encouraged to start new societies to cater for other interests.



» Support for International Students at WIT

In Waterford Institute of Technology (WIT) support services are viewed as an intrinsic aspect of student development and a complement to academic tuition.

Special Support services provided for international students include:

- » Providing pre-arrival information and advice about travel, visas, accommodation etc.
- » Telephone contact and support for emergencies.
- » Liaising with parents and agents.
- » Arranging for students to be met at the airport on arrival in Ireland, if necessary.
- » Providing an induction programme for international students to familiarise them with basic life skills in a new country and to prepare them for their studies.
- » Assisting students to integrate into their classes.
- » Providing a social programme to assist international students to get to know each other and to enjoy the experience of living abroad.
- » English Language support for international students.
- » Acting as an advocate for students who encounter specific problems such as health, finance, accommodation, study problems.
- » Referral to the general student support services which include a medical centre, counselling service and pastoral care

Accommodation for International Students

The excellence of the accommodation for students is one of the reasons for WIT's great popularity with international students. The International Office will assist international students to make arrangements for accommodation on either a temporary or a year-long basis.

Temporary Accommodation

Provisional accommodation can be provided for students between the time they arrive in Ireland and the time they select more permanent arrangements. Information about this will be provided when the student is called to attend induction and registration.

Longer Term Accommodation

Students may then select accommodation from the following options:

1. College managed accommodation

Full details of these, with photographic views are to be found at www.wit.ie/as/mainpages/accommodation_services.htm. This accommodation is recently-built, high-quality, safe, near the campus and is customised for the needs of students. It is also a good way to meet other students and to make friends. WIT strongly recommends this option for first year students.

2. Private rented accommodation

... is also available in Waterford. This may be slightly cheaper than college accommodation but can be of varying quality and convenience regarding proximity to college.

3. Home stay arrangements

...are not usual for WIT students, but if that is what students really want, the Institute will assist in the search.



» Planning your Study Abroad

Going abroad to study for either a short or a longer period of time is a big but exciting step in any student's life! To make sure that everything will be in order for your stay abroad, please read through the following checklist whilst making preparations.

1. Applying for Entry

Check that you have the entry requirements for the programme in question, and submit the appropriate application form by the deadline specified. This programme specific information is detailed in each section of this brochure. Application forms can be downloaded from our website, www.wit.ie/international or will be distributed with this handbook. Applications for exchange, transfer, or placement programmes should be made through the International Office of your home university or college. Applications for full-time study or the WIT Summer School can be made directly to the International Office, WIT, Cork Road, Ireland.

2. Visa Requirements

It is the responsibility of applicants to check the visa requirements for study or work placement in Ireland. The Department of Justice, Equality and Law Reform is responsible for determining Irish immigration policy. For full information regarding all aspects of immigration into Ireland, check <http://foreignaffairs.gov.ie/services/visa>.

Citizens of the US do not require a visa for entry into Ireland, but may require documentation or a visa to substantiate a longer stay in Ireland, which is study or work specific. We advise that prospective North American students to WIT contact the Irish Embassy or Consulate in their home country, and establish the relevant visa and/or documentation requirements given the nature of their intended stay.

3. Financial Information

Because this may change from time to time, detailed information is provided on a separate sheet or on our website. Applicants should ensure that the information they have is current. The main costs for international students are:

1. Tuition fees
2. Cost of living
3. Air fares from their home country to Ireland
4. Travel and health insurance
5. Tuition Fee Policy

Tuition fees at WIT are the most competitive in the Irish state sector. Please note the following when you are selecting a college for study abroad or exchange.

- » The WIT fee for study abroad programmes includes registration, all tuition, access to support services, examination and capitation fees. It does not include books or special equipment required for courses.
- » Fees will be refunded in full to study abroad applicants who decide not to come to WIT or register on the programme, which has been offered to them. Once a student has registered at WIT, a tuition fee refund policy will apply if a student wishes to depart.
- » Details of what is included in the cost of the summer school are provided on a separate sheet.

6. Cost of Living

The cost of living includes rent, food, bus fares, books, laundry and entertainment. We estimate that students should allow at least 6,000 euro per academic year to cover the cost of living. Some students can supplement the funding provided by taking on part-time work. The minimum wage for part-time work is around 7.50 euro per hour. The Institute advises students to take on such work only if absolutely necessary as it can have a very adverse effect on their studies.



International Education Office at WIT

International Office,
Cork Road Campus,
Waterford Institute of Technology,
Waterford,
Ireland.

Opening Hours: Monday - Friday
09.15 - 12.15h, 14.15 - 17.00h

Phone: +353 51 845506 / 845515

Fax: +353 51 302486

Email: International@wit.ie

Website: www.wit.ie/international

